

# the grove

TOWNHOMES AT WILDFLOWER

FLOORPLANS





# Contemporary Townhomes

## FLOORPLAN 1

Floorplan 1s are built into the natural contours of the landscape, with the ground floor subtly dipping into the ground surface. This accommodates the garage under the main living space and allows for the entrance to be conveniently located steps away from your main living space.

## FLOORPLAN 2

Floorplan 2s are strategically positioned on level ground, ensuring easy access to your garage and entrance on that level. Your main living area is thoughtfully positioned on the second floor, providing stunning views and optimal privacy.



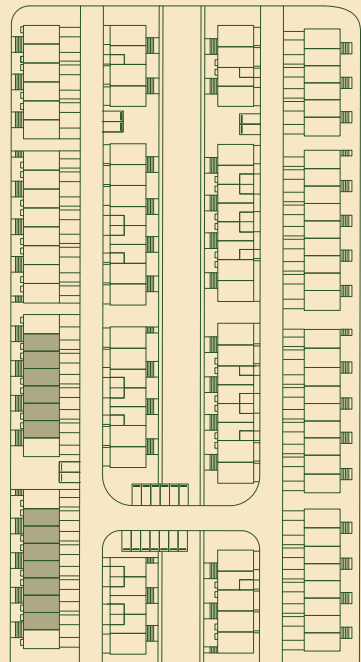


TOWNHOME SERIES

# Aspen 1

1,284 SQ. FT.

3 Bedrooms  
2.5 Baths



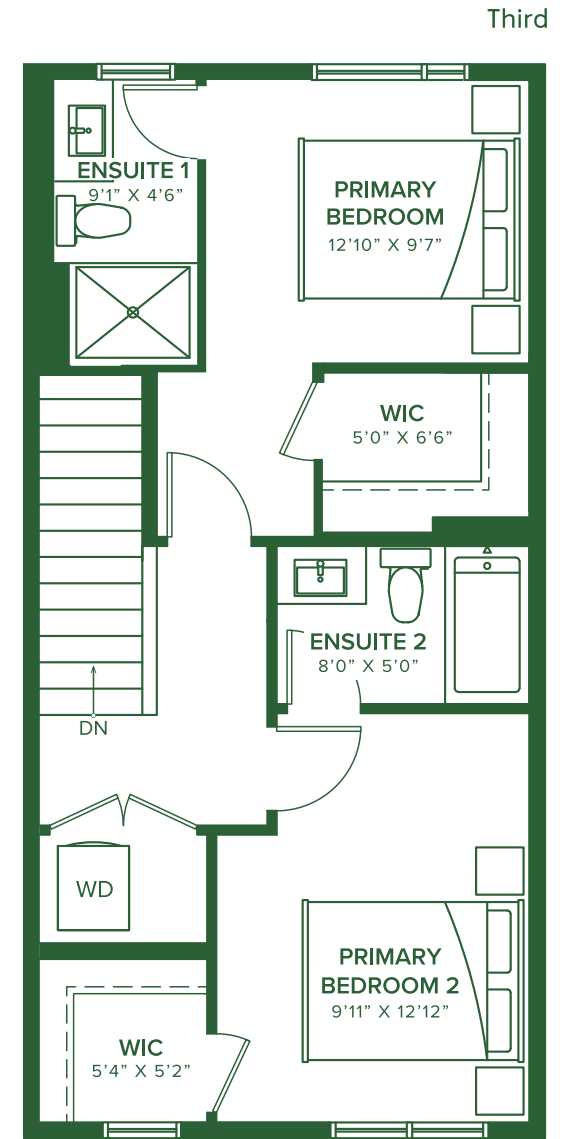
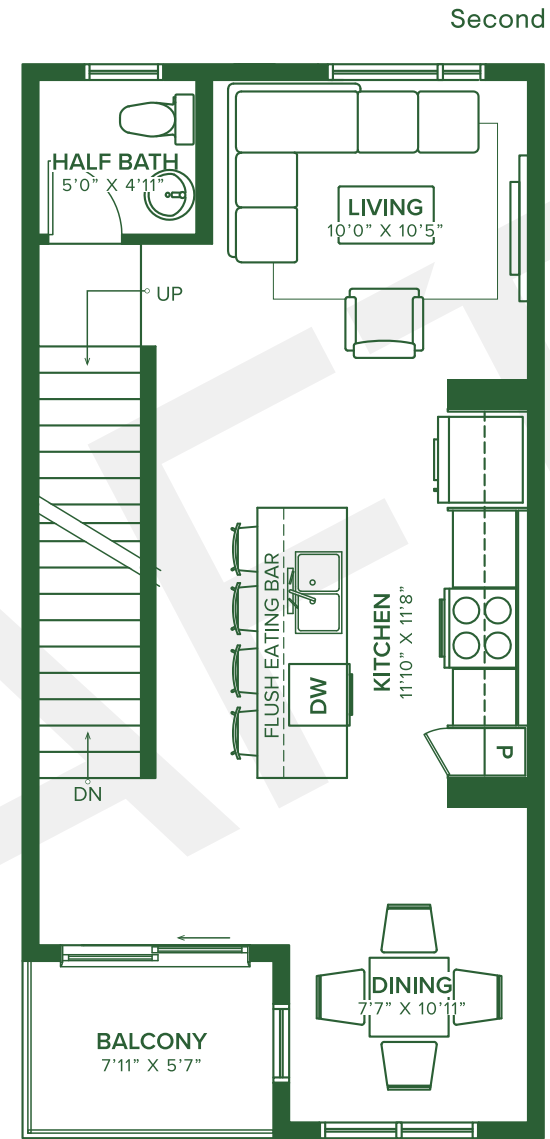
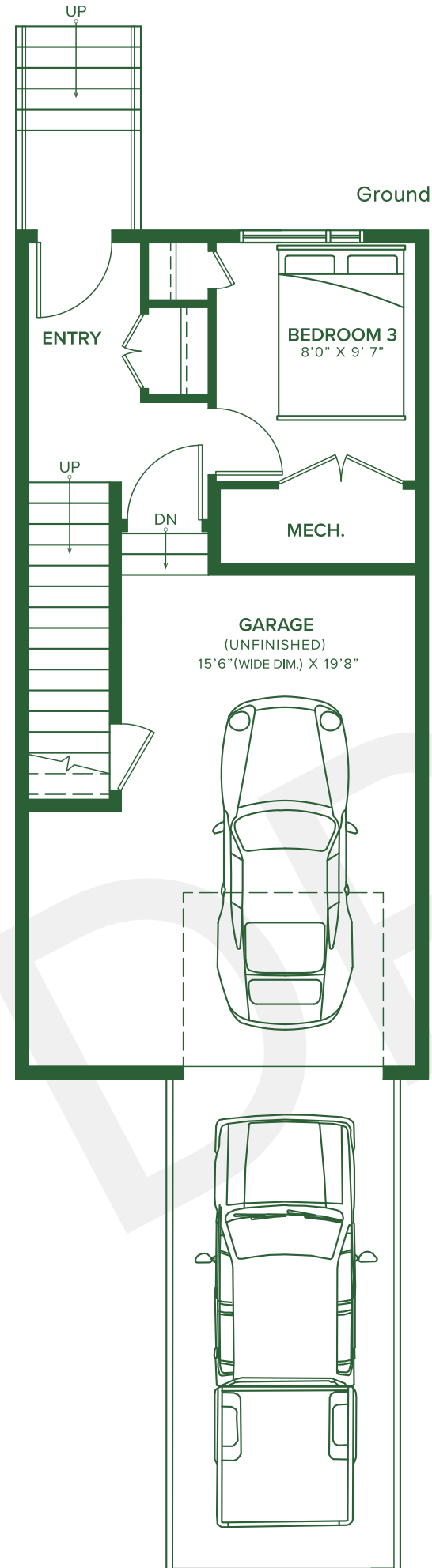
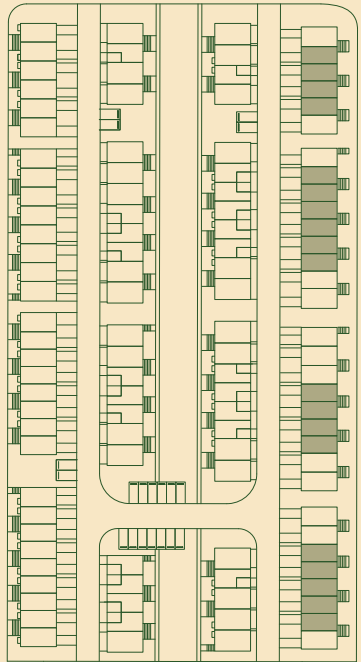
Subject to the disclosure requirements set out in the Condominium Property Act (Alberta)(if applicable), the Developer reserves the right to make revisions it deems appropriate in its sole discretion to all plans, dimensions and specifications provided, including but not limited to column locations and window location and size. Actual usable floor space may vary from the stated floor area. The purchase price does not include any furniture. Renderings are artist's concepts only. This drawing contains information which is proprietary to and is the property of the Developer and may not be used, reproduced, or disclosed in any manner other than in relation to the purchase of a condominium unit within this project without the permission of the Developer. E. & O. E. May 2024. Pricing subject to change without notice.

TOWNHOME SERIES

# Aspen 2

1,284 SQ. FT.

3 Bedrooms  
2.5 Baths



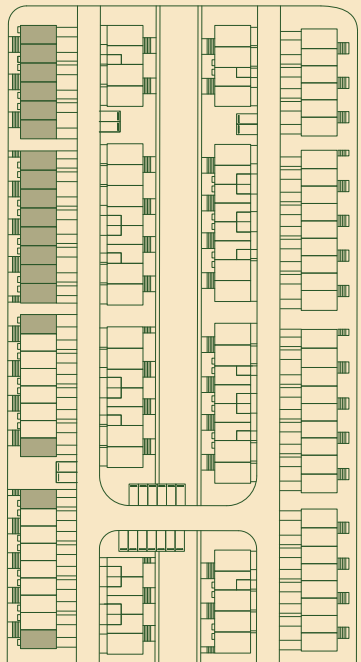
Subject to the disclosure requirements set out in the Condominium Property Act (Alberta) (if applicable), the Developer reserves the right to make revisions it deems appropriate in its sole discretion to all plans, dimensions and specifications provided, including but not limited to column locations and window location and size. Actual usable floor space may vary from the stated floor area. The purchase price does not include any furniture. Renderings are artist's concepts only. This drawing contains information which is proprietary to and is the property of the Developer and may not be used, reproduced, or disclosed in any manner other than in relation to the purchase of a condominium unit within this project without the permission of the Developer. E. & O. E. May 2024. Pricing subject to change without notice.

TOWNHOME SERIES

# Elm 1

1,405 SQ.FT.

4 Bedrooms  
2.5 Baths



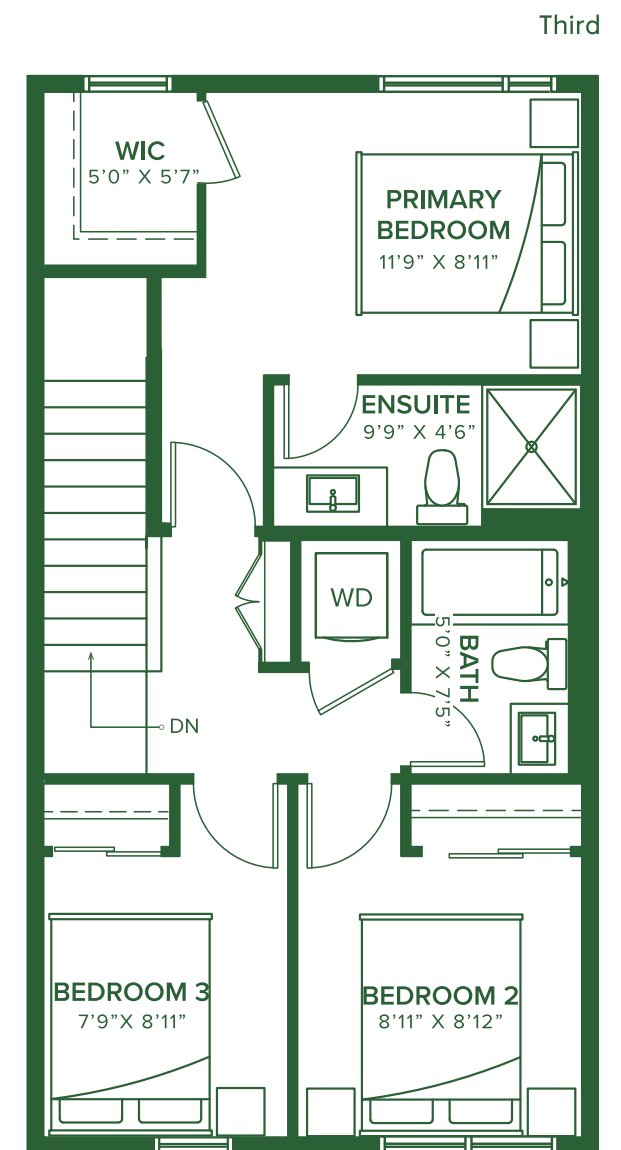
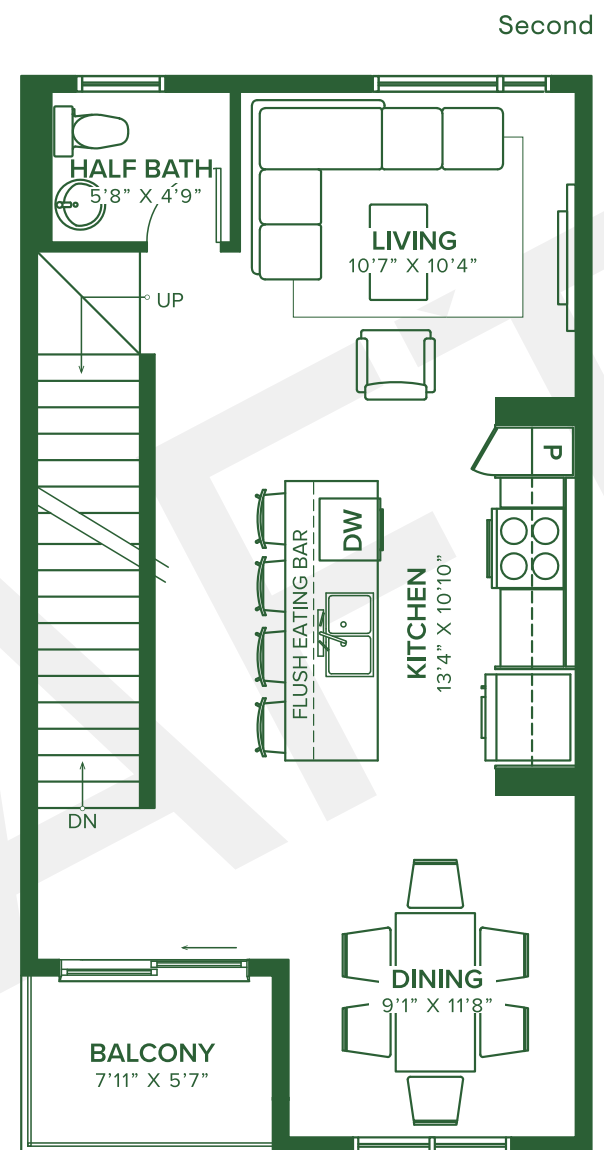
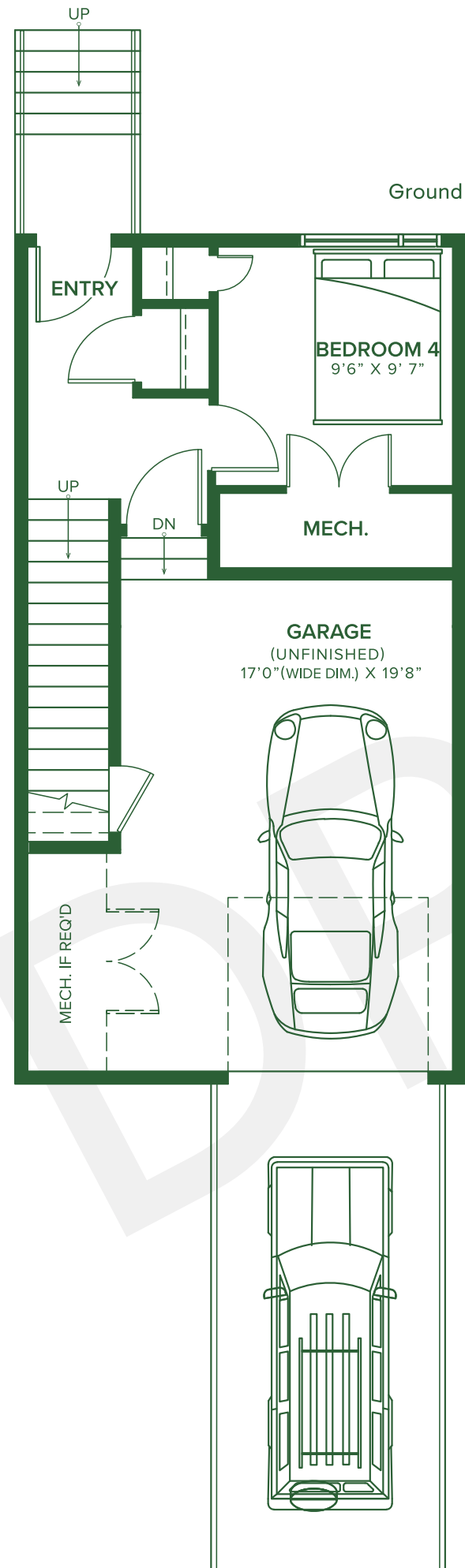
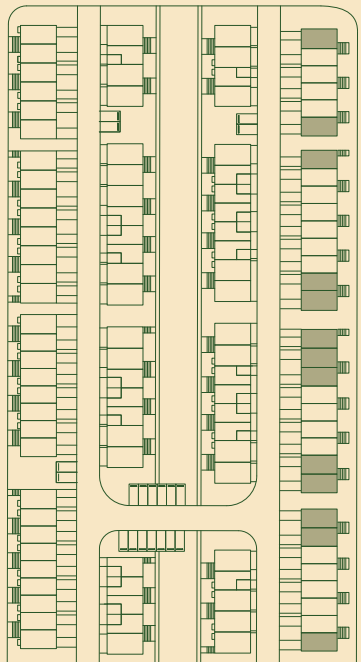
Subject to the disclosure requirements set out in the Condominium Property Act (Alberta)(if applicable), the Developer reserves the right to make revisions it deems appropriate in its sole discretion to all plans, dimensions and specifications provided, including but not limited to column locations and window location and size. Actual usable floor space may vary from the stated floor area. The purchase price does not include any furniture. Renderings are artist's concepts only. This drawing contains information which is proprietary to and is the property of the Developer and may not be used, reproduced, or disclosed in any manner other than in relation to the purchase of a condominium unit within this project without the permission of the Developer. E. & O. E. May 2024. Pricing subject to change without notice.

TOWNHOME SERIES

# Elm 2

1,405 SQ.FT.

4 Bedrooms  
2.5 Baths



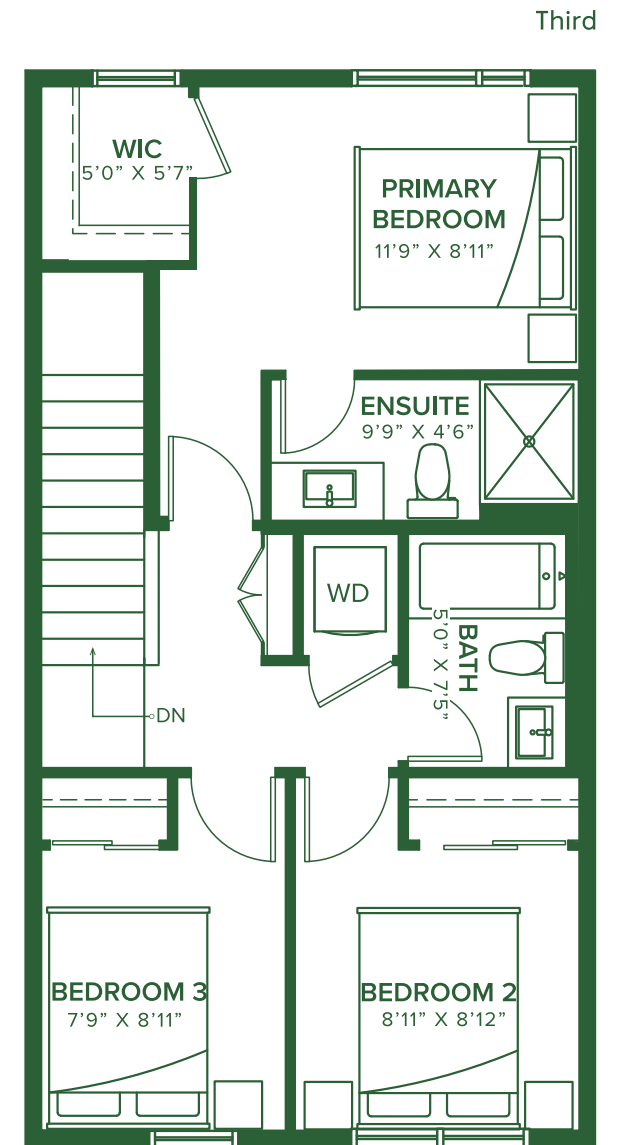
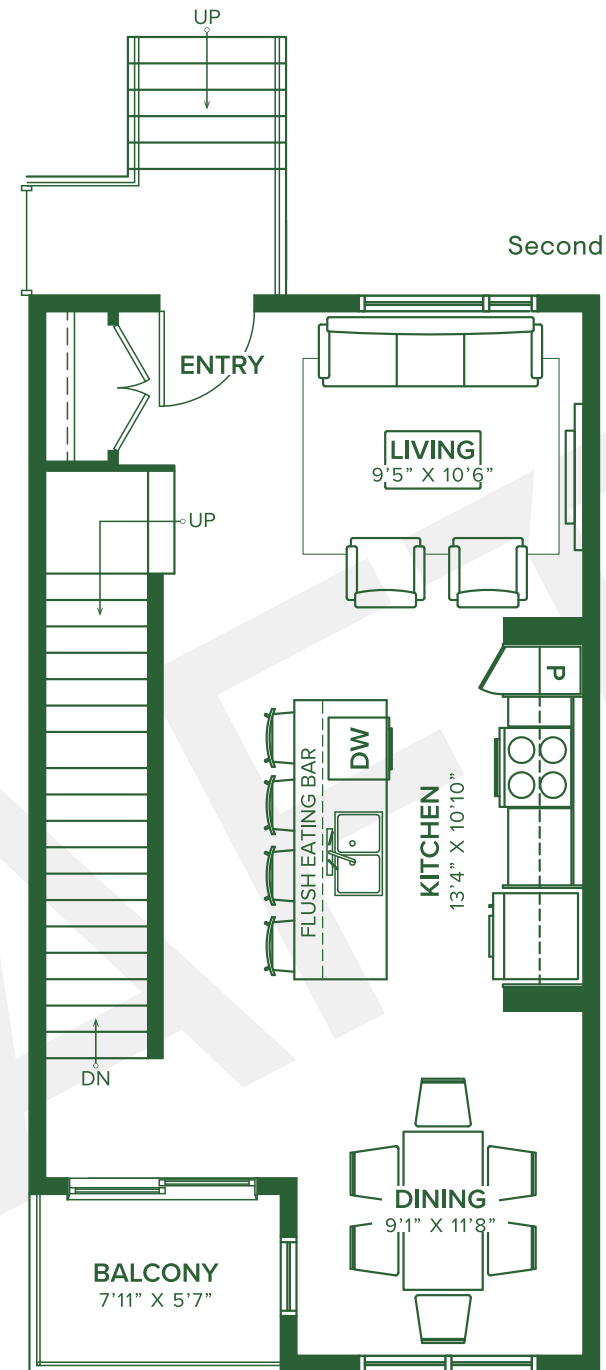
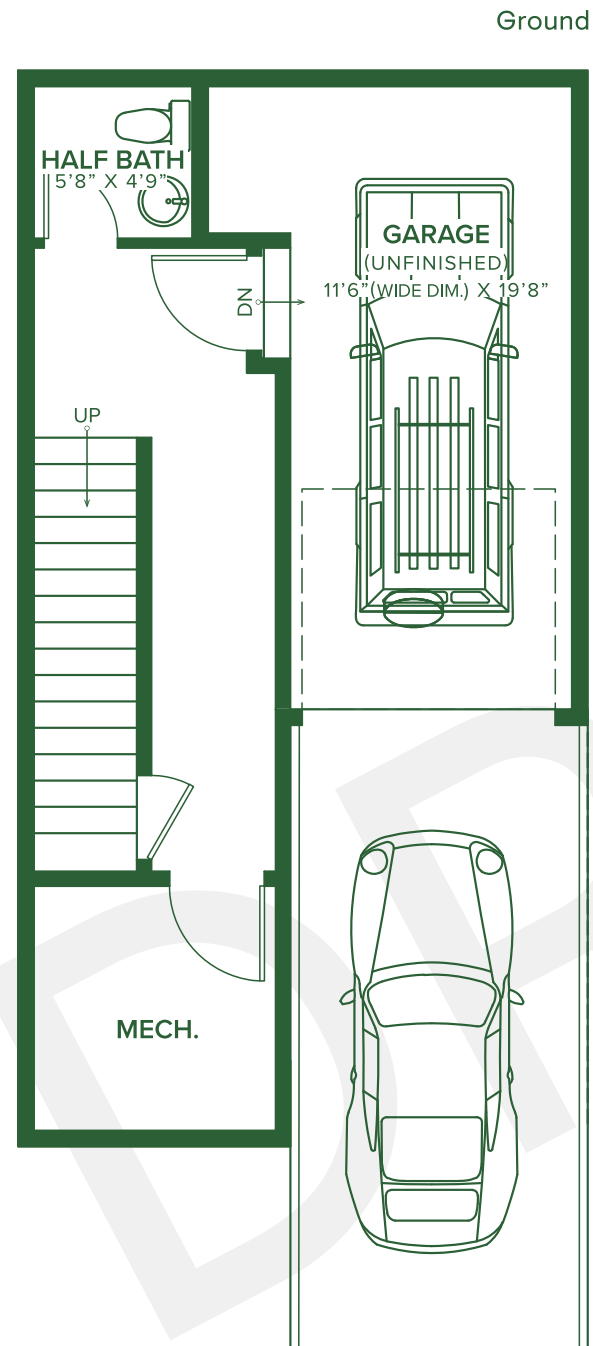
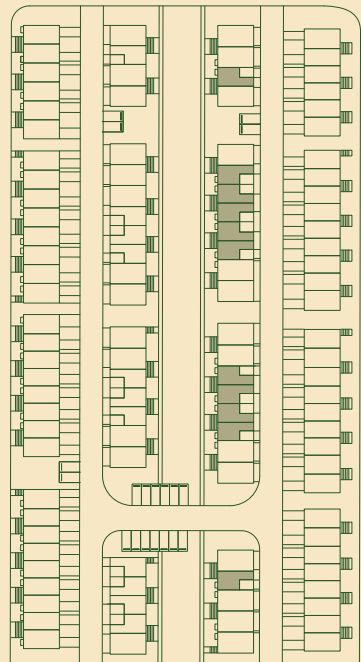
Subject to the disclosure requirements set out in the Condominium Property Act (Alberta)(if applicable), the Developer reserves the right to make revisions it deems appropriate in its sole discretion to all plans, dimensions and specifications provided, including but not limited to column locations and window location and size. Actual usable floor space may vary from the stated floor area. The purchase price does not include any furniture. Renderings are artist's concepts only. This drawing contains information which is proprietary to and is the property of the Developer and may not be used, reproduced, or disclosed in any manner other than in relation to the purchase of a condominium unit within this project without the permission of the Developer. E. & O. E. May 2024. Pricing subject to change without notice.

TOWNHOME SERIES

# Larch 1

1,397 SQ.FT.

3 Bedrooms  
2.5 Baths



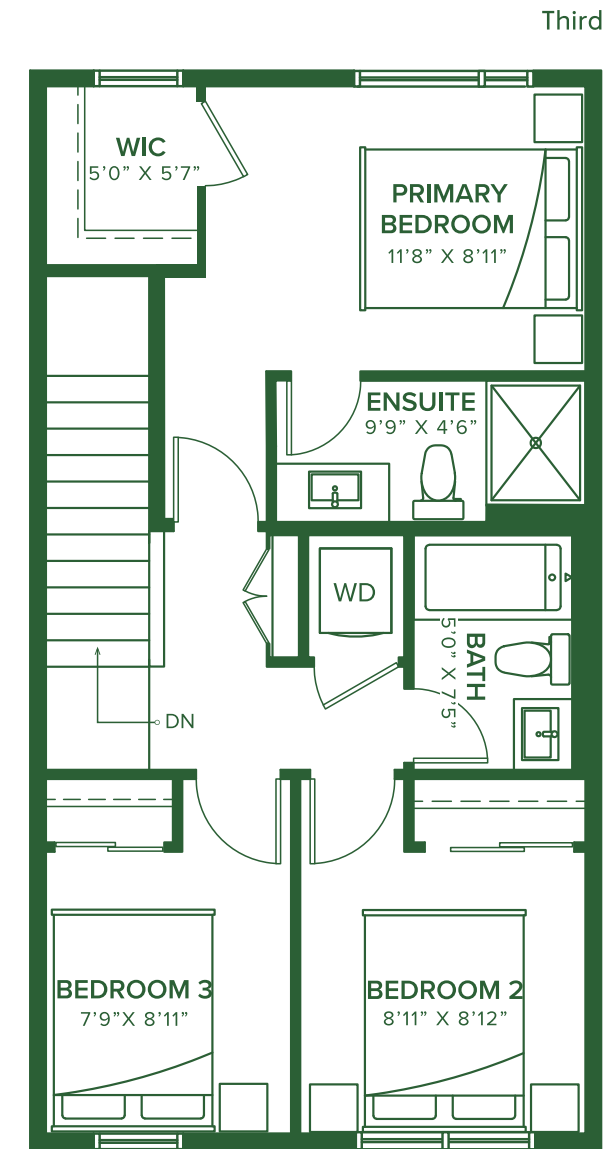
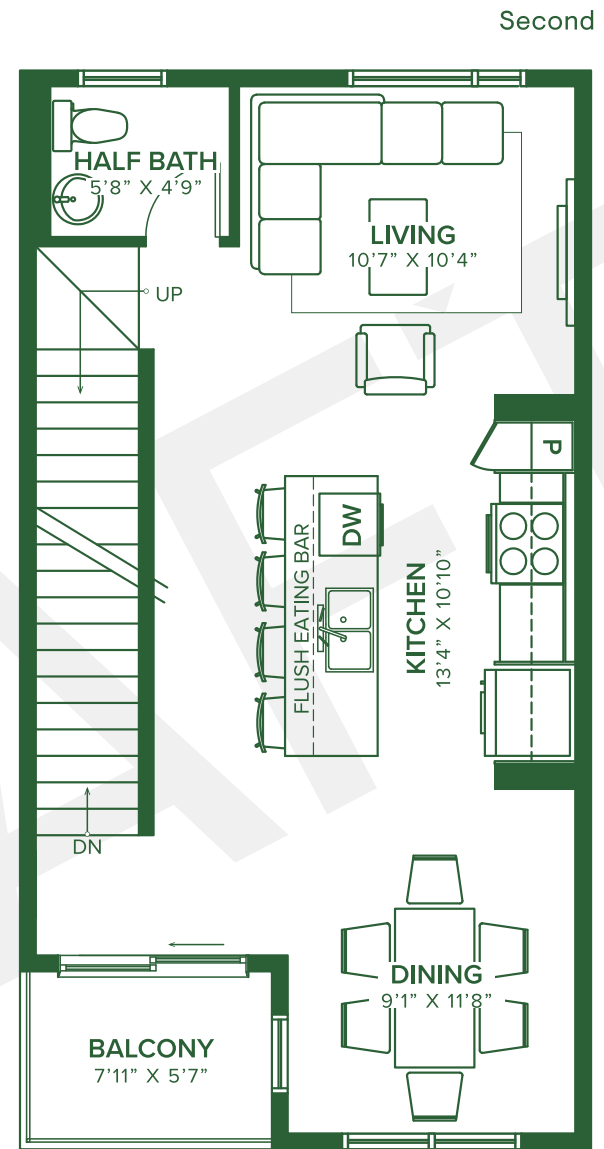
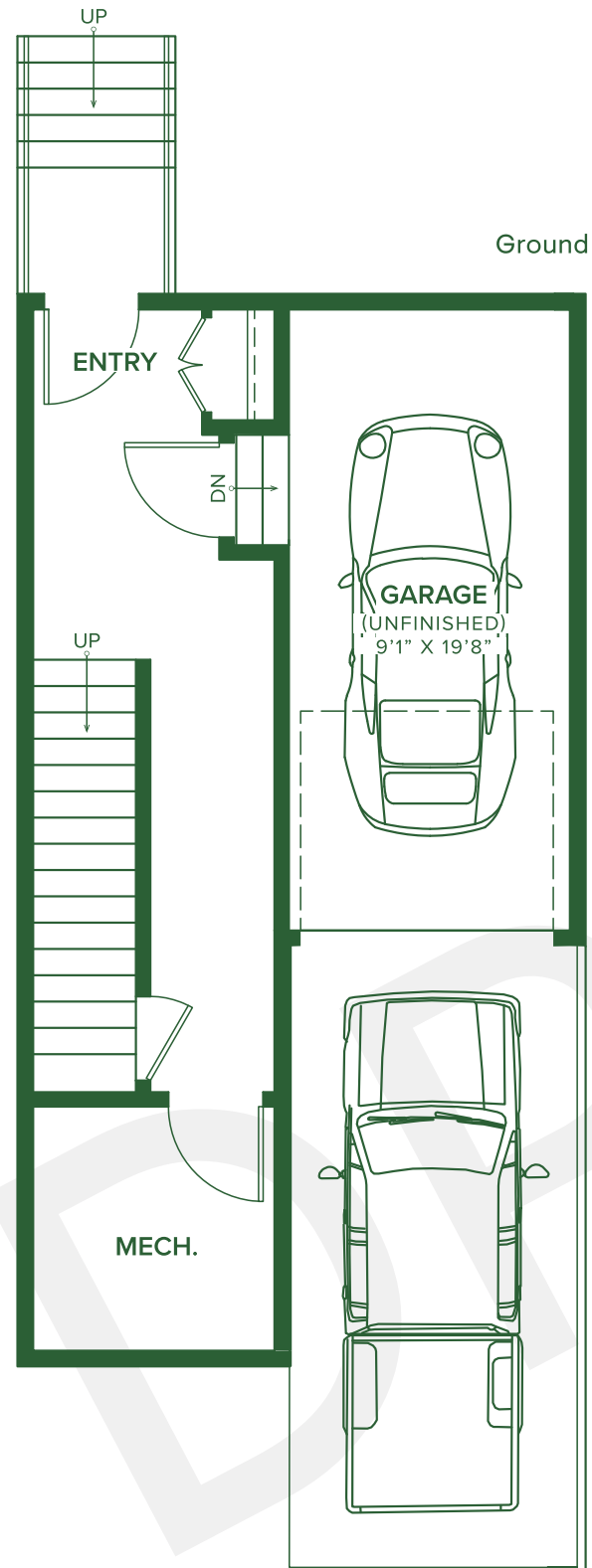
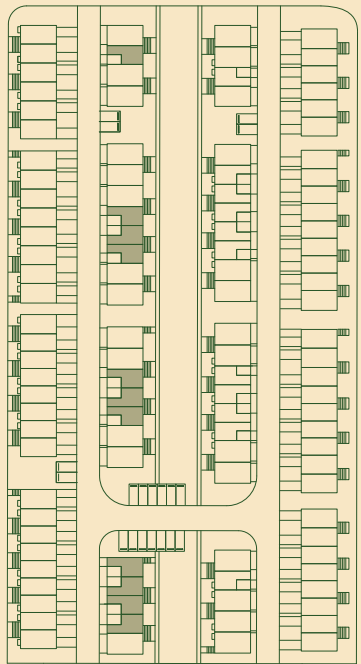
Subject to the disclosure requirements set out in the Condominium Property Act (Alberta)(if applicable), the Developer reserves the right to make revisions it deems appropriate in its sole discretion to all plans, dimensions and specifications provided, including but not limited to column locations and window location and size. Actual usable floor space may vary from the stated floor area. The purchase price does not include any furniture. Renderings are artist's concepts only. This drawing contains information which is proprietary to and is the property of the Developer and may not be used, reproduced, or disclosed in any manner other than in relation to the purchase of a condominium unit within this project without the permission of the Developer. E. & O. E. May 2024. Pricing subject to change without notice.

TOWNHOME SERIES

# Larch 2

1,397 SQ.FT.

3 Bedrooms  
2.5 Baths



Subject to the disclosure requirements set out in the Condominium Property Act (Alberta)(if applicable), the Developer reserves the right to make revisions it deems appropriate in its sole discretion to all plans, dimensions and specifications provided, including but not limited to column locations and window location and size. Actual usable floor space may vary from the stated floor area. The purchase price does not include any furniture. Renderings are artist's concepts only. This drawing contains information which is proprietary to and is the property of the Developer and may not be used, reproduced, or disclosed in any manner other than in relation to the purchase of a condominium unit within this project without the permission of the Developer. E. & O. E. May 2024. Pricing subject to change without notice.

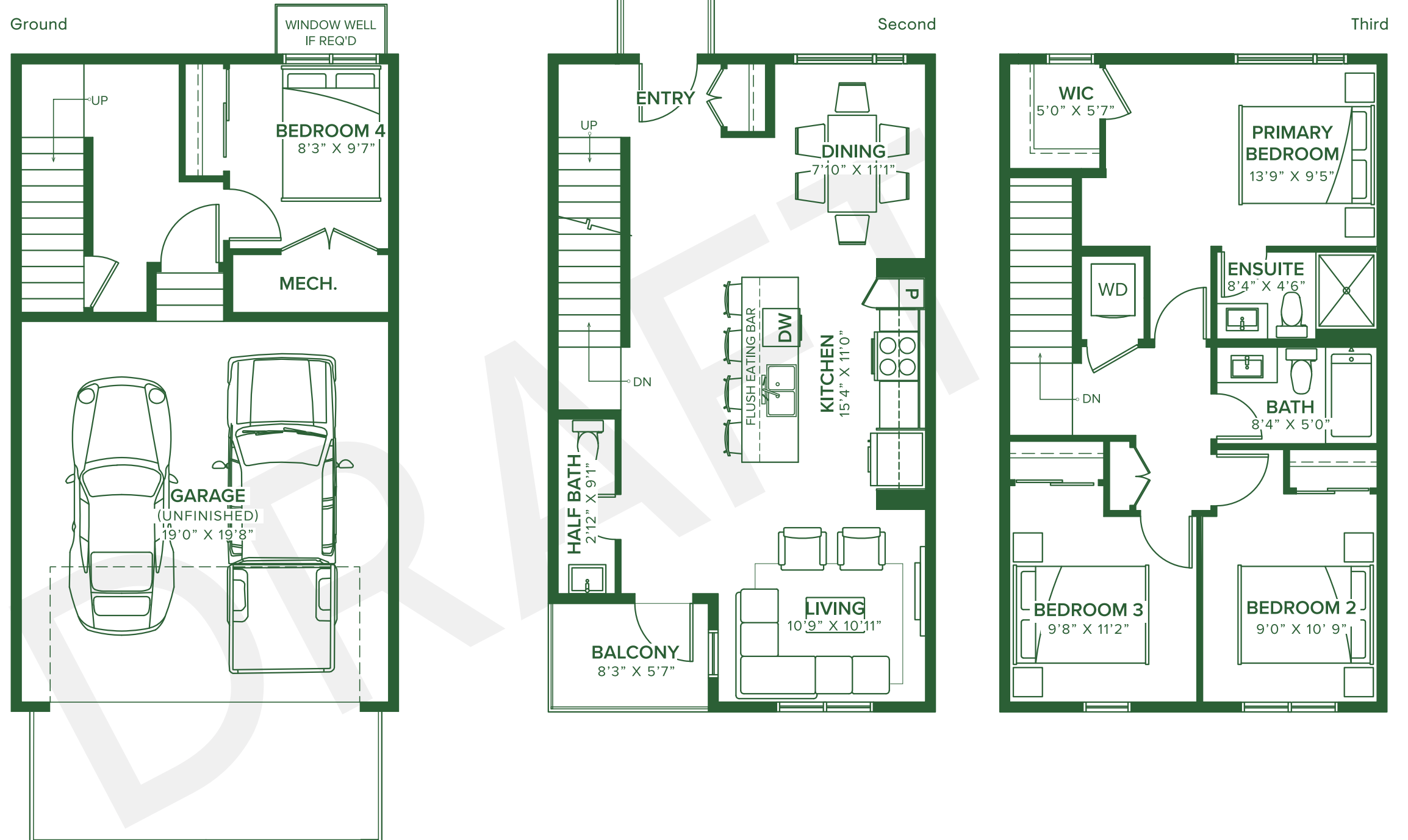
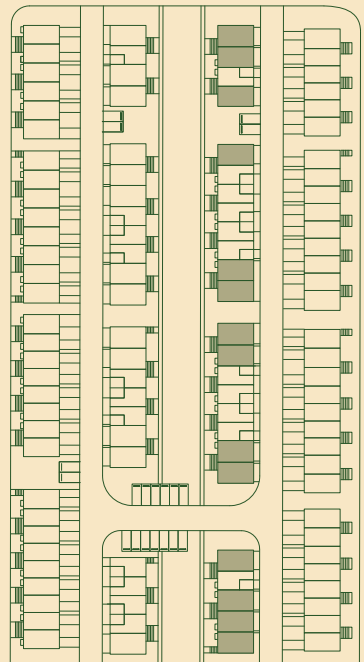


TOWNHOME SERIES

# Spruce 1

1,523 SQ.FT.

4 Bedrooms  
2.5 Baths



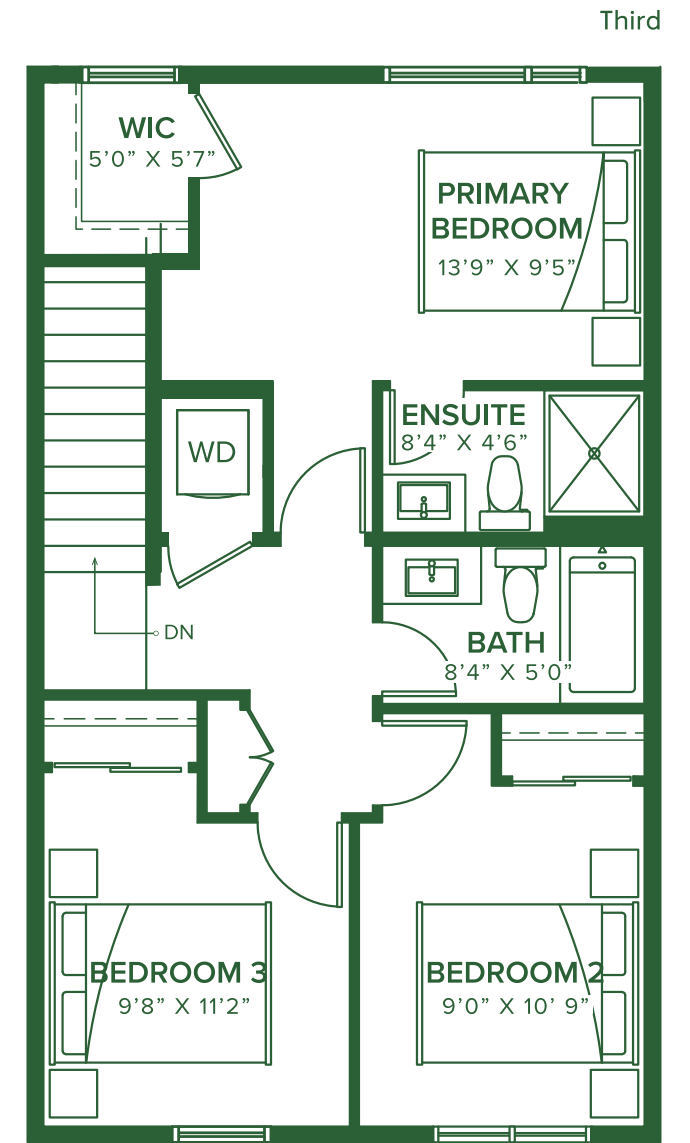
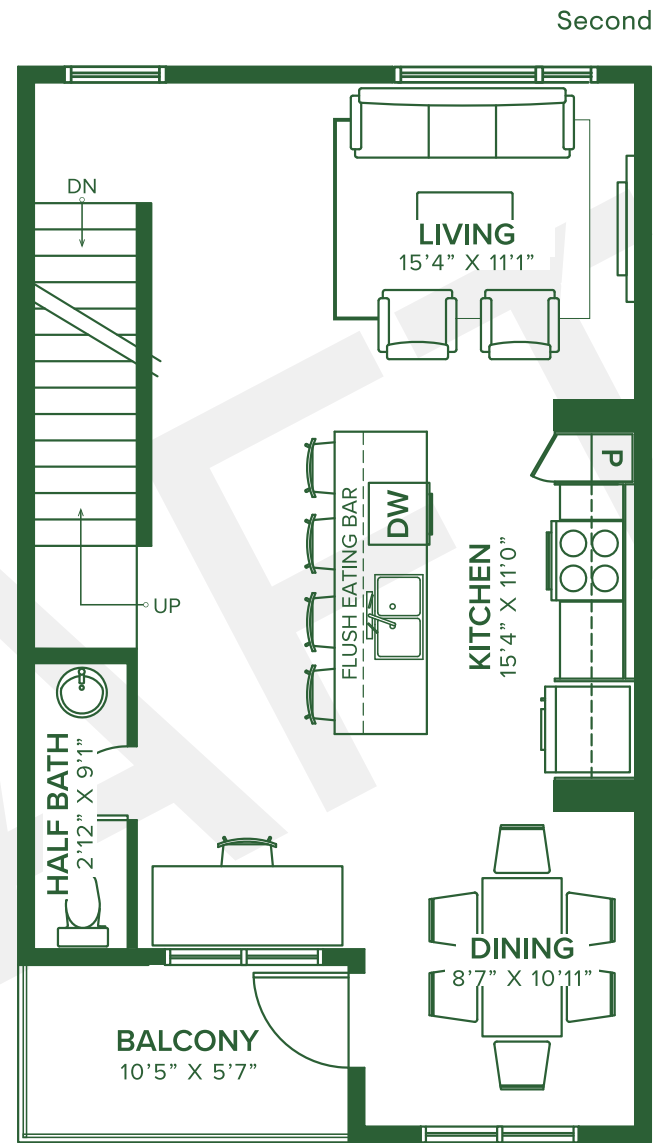
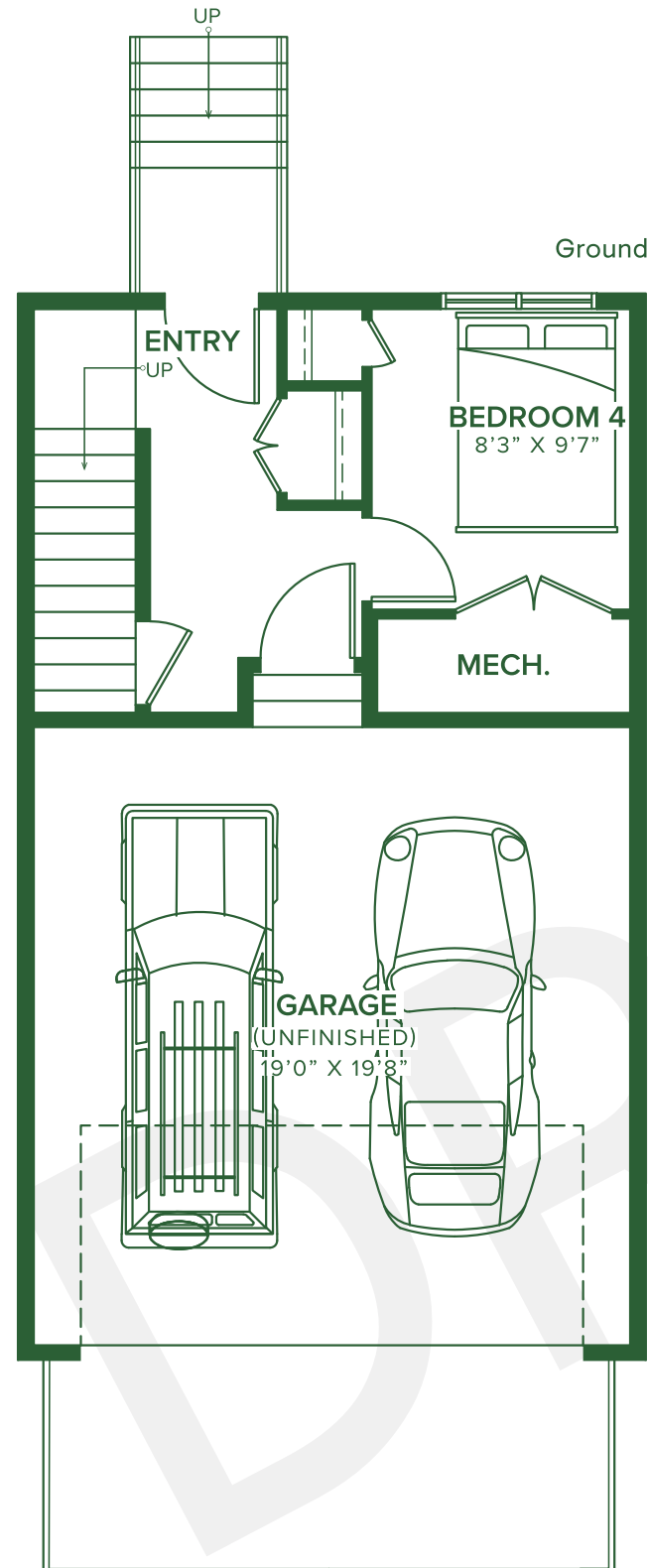
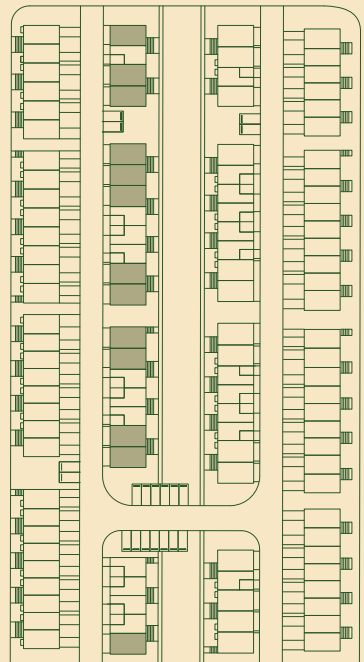
Subject to the disclosure requirements set out in the Condominium Property Act (Alberta)(if applicable), the Developer reserves the right to make revisions it deems appropriate in its sole discretion to all plans, dimensions and specifications provided, including but not limited to column locations and window location and size. Actual usable floor space may vary from the stated floor area. The purchase price does not include any furniture. Renderings are artist's concepts only. This drawing contains information which is proprietary to and is the property of the Developer and may not be used, reproduced, or disclosed in any manner other than in relation to the purchase of a condominium unit within this project without the permission of the Developer. E. & O. E. May 2024. Pricing subject to change without notice.

TOWNHOME SERIES

# Spruce 2

1,523 SQ.FT.

4 Bedrooms  
2.5 Baths



Subject to the disclosure requirements set out in the Condominium Property Act (Alberta)(if applicable), the Developer reserves the right to make revisions it deems appropriate in its sole discretion to all plans, dimensions and specifications provided, including but not limited to column locations and window location and size. Actual usable floor space may vary from the stated floor area. The purchase price does not include any furniture. Renderings are artist's concepts only. This drawing contains information which is proprietary to and is the property of the Developer and may not be used, reproduced, or disclosed in any manner other than in relation to the purchase of a condominium unit within this project without the permission of the Developer. E. & O. E. May 2024. Pricing subject to change without notice.



**65+ YEARS. 100,000+ HOMES.**  
SINGLE-FAMILY | TOWNHOMES | CONDOS  
CALGARY | GTA | OTTAWA

